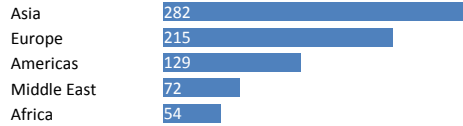
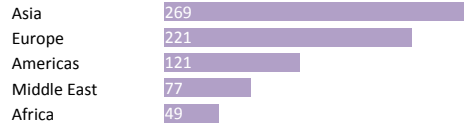


**1 Sales by Region (2012 YTD, MUSD)**



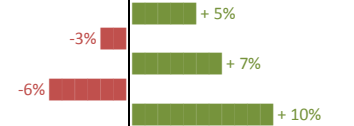
**Chart 1**  
A clean and easy bar chart with data labels inside bars created with conditional formatting. Categories are automatically displayed in descending order.

**2 Costs by Region (2012 YTD, MUSD)**



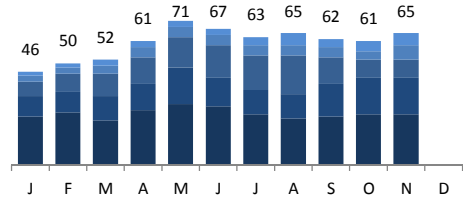
**Chart 2**  
Another bar chart in the same format and same order like chart 1 for easy comparison of up to five categories.

**3 Profit Margin by Region (2012, YTD)**



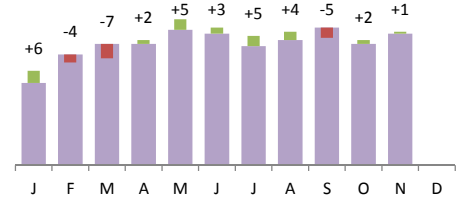
**Chart 3**  
A smart way of showing bars without the regular charting function or conditional formatting. This one is a purely formula-based illustration with a fixed vertical axis and red bars for negative values (labeled left) and green bars for positive values (labeled right)

**4 Sales by Month (2012, MUSD)**



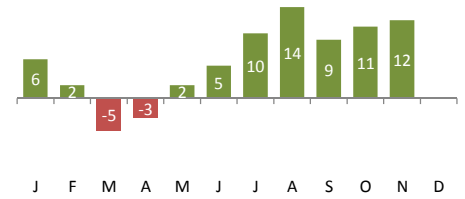
**Chart 4**  
A stacked column chart piling up five data series and topped with grand totals. Annoying error values or labels showing 0 for missing future data are suppressed

**5 Cost & Profit/Loss by Month (2012, MUSD)**



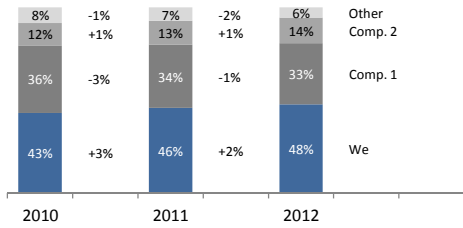
**Chart 5**  
A column chart with mini columns as variance indicators and labels displayed above each column. The mini columns change color based on sign. Annoying error values or labels showing 0 for missing future data

**6 Profit/Loss (2012, YTD, MUSD)**



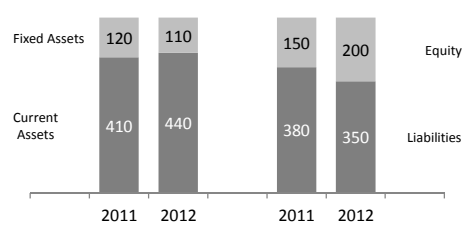
**Chart 6**  
A column chart plotting positive values upwards (green) and negative values downwards (red) with labels inside columns. Annoying error values or labels showing 0 for missing future data are suppressed automatically.

**7 Market Share (2010-2012, YoY)**



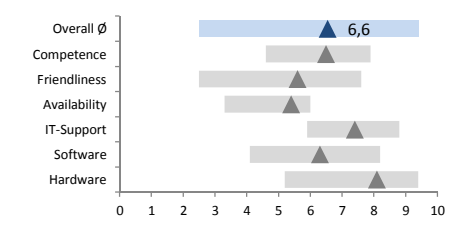
**Chart 7**  
A stacked column chart (100%) comparing composition changes over 3 periods. Variance labels between the columns as well as the legend on the right are automatically centered vertically according to the value of the respective

**8 Balance Sheet (2011-2012)**



**Chart 8**  
A stacked column chart (100%) comparing 4 categories over 2 periods divided into 2 sections. The legends are automatically centered vertically according to the value of the respective outside data series.

**9 Customer Feedback Index (2012, YTD Ø)**



**Chart 9**  
A gantt chart visualizing data ranges for 7 categories with floating bars and markers indicating average values.